

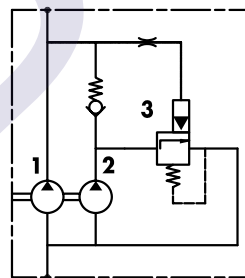
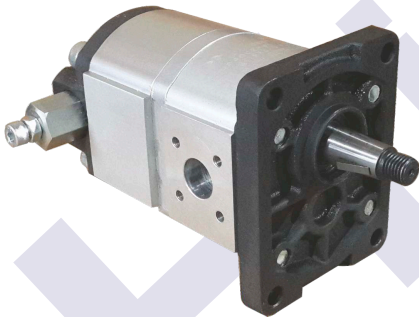
- 1 : First stage high pressure
- 2 : Second stage low pressure
- 3 : Unloading valve

**GR 10 HIGH-LOW PUMPS**

Code Number	Front Pump Displacement		Rear Pump Displacement		Front Pump Max. Pressure bar	Rear Pump Max. Pressure bar	Max. Speed rev/min
	cm <sup>3</sup>	Lt (1500d/dk)	cm <sup>3</sup>	Lt (1500d/dk)			
H 10C1.6X650/6.9X651HL	1.6	2.4	6.9	10.35	230	35	3500
H 10C2.5X650/4.8X651HL	2.5	3.75	4.8	7.2	230	35	3500
H 10C3.2X650/2.5X651HL	3.2	4.8	2.5	3.75	210	35	3500
H 10C4.4X650/8X651HL	4.4	6.6	8	12	210	35	3500

\* Unloading valve opens at 35 bar.

\* Oil returns to inlet from rear pump and only front pump operates.



- 1 : First stage high pressure
- 2 : Second stage low pressure
- 3 : Unloading valve

**GR 20 HIGH-LOW PUMPS**

Code Number	Front Pump Displacement		Rear Pump Displacement		Front Pump Max. Pressure bar	Rear Pump Max. Pressure bar	Max. Speed rev/min
	cm <sup>3</sup>	Lt (1500d/dk)	cm <sup>3</sup>	Lt (1500d/dk)			
H 22C5/12X815R	5	7.5	12	18	250	70	3000
H 22C3.5/11X815R	3.5	5.25	11	16.5	250	70	3000
H 22C3.5/6.5X815R	3.5	9.75	6.5	9.75	250	70	3000
H 22C4.5/7X815R	4.5	6.75	7	10.5	250	70	3000
H 22C10/18X815R	10	15	18	27	200	70	3000

\* Unloading valve opens at 65-73 bar.

\* Oil returns to inlet from rear pump and only front pump operates.

\* Please contact us for other displacements.